

# **HISTOLOGY**

**HISTOLOGY**

**PATHOLOGY**

## **FOUR GENERAL TISSUE TYPES**

**1. EPITHELIAL TISSUE**

**2. CONNECTIVE TISSUE**

**3. MUSCLE TISSUE**

**4. NERVOUS TISSUE**

## **EMBRYONIC GERM LAYERS**

**1. ECTODERM**

**2. MESODERM**

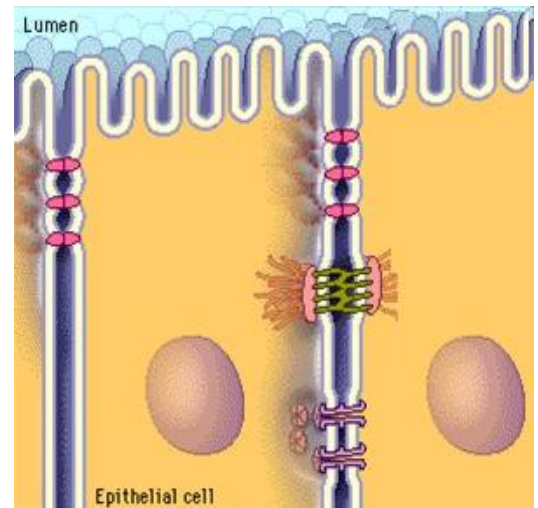
**3. ENDODERM**

## CELL JUNCTIONS

### 1. TIGHT JUNCTION

### 2. DESMOSOME

### 3. GAP JUNCTION



## TWO TYPES OF GLANDS

### 1. EXOCRINE GLANDS

### 2. ENDOCRINE GLANDS

## SEROUS MEMBRANE

# ***EPITHELIAL TISSUE***

## ***GENERAL INFO***

***1.***

***2.***

***3.***

## ***ARRANGEMENT***

***SIMPLE***

***STRATIFIED***

***PSEUDOSTRATIFIED***

## ***SHAPES***

***SQUAMOUS***

***CUBOIDAL***

***COLUMNAR***

***TRANSITIONAL***

## **SIMPLE SQUAMOUS EPITHELIUM**

***DESCRIPTION:***

***LOCATION:***

***FUNCTION:***

## **SIMPLE CUBOIDAL EPITHELIUM**

***DESCRIPTION:***

***LOCATION:***

***FUNCTION:***

## **SIMPLE COLUMNAR EPITHELIUM**

***DESCRIPTION:***

***LOCATION:***

***FUNCTION:***

## **STRATIFIED SQUAMOUS EPITHELIUM**

***DESCRIPTION:***

***LOCATION:***

***FUNCTION:***

## **STRATIFIED CUBOIDAL EPITHELIUM**

***DESCRIPTION:***

***LOCATION:***

***FUNCTION:***

## **STRATIFIED COLUMNAR EPITHELIUM**

***DESCRIPTION:***

***LOCATION:***

***FUNCTION:***

## **STRATIFIED TRANSITIONAL EPITHELIUM**

***DESCRIPTION:***

***LOCATION:***

***FUNCTION:***

## **PSEUDOSTRATIFIED EPITHELIUM**

***DESCRIPTION:***

***LOCATION:***

***FUNCTION:***