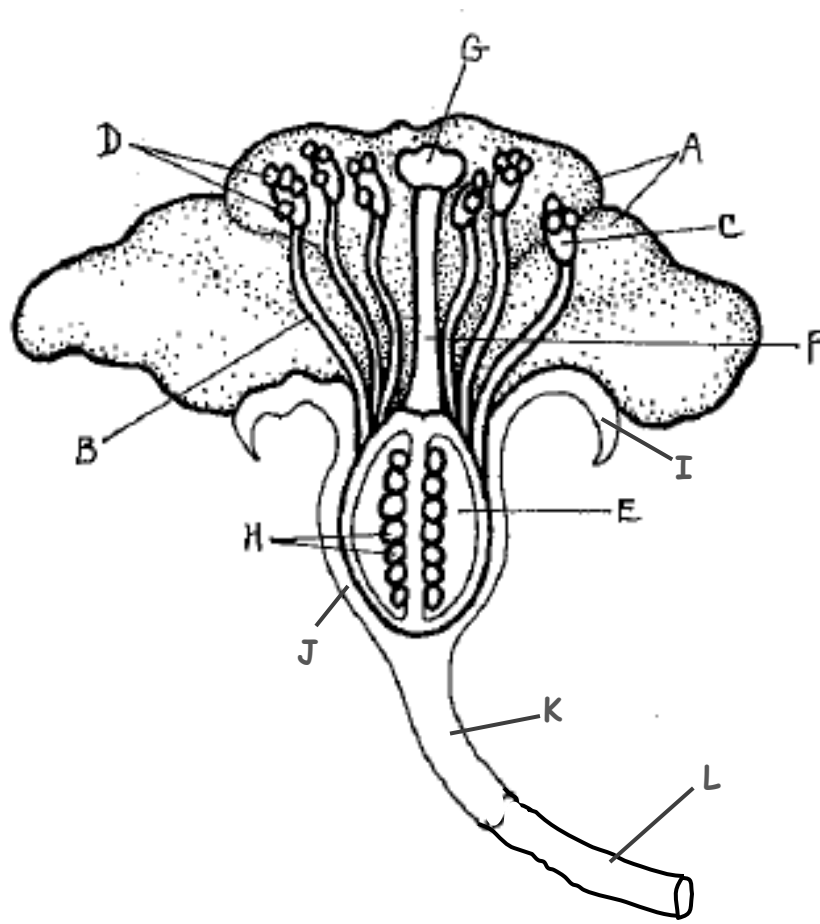


Flower Anatomy



PETAL ^A

Use diff. shades of green for I-L

SEPAL ^I

RECEPTACLE ^J

PEDUNCLE ^K

STEM ^L

STAMEN:

Use same color (diff. shades for B and C)

FILAMENT ^B

ANTHER ^C

POLLEN ^D

Color yellow

PISTIL:

Use same color (diff. shades for E-G)

STIGMA ^G

STYLE ^F

OVARY ^E

OVULE ^H