

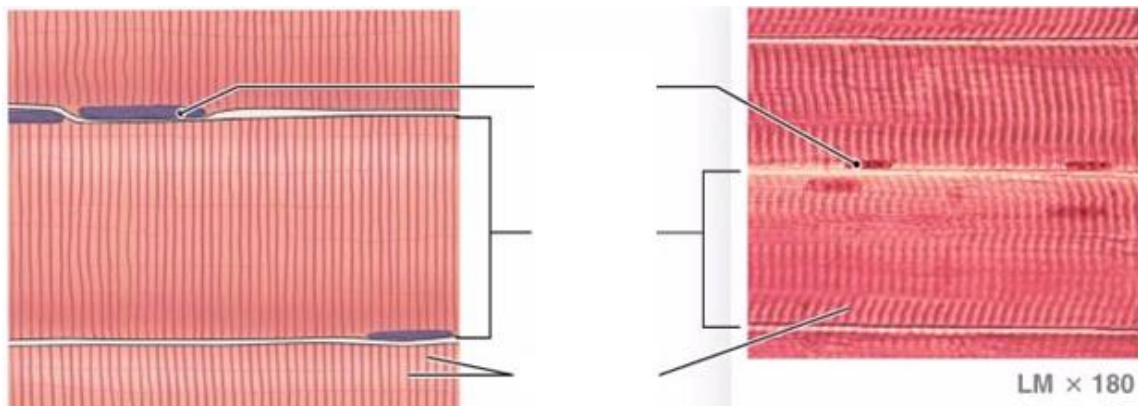
MUSCLE TISSUE NOTES

1. SKELETAL MUSCLE:

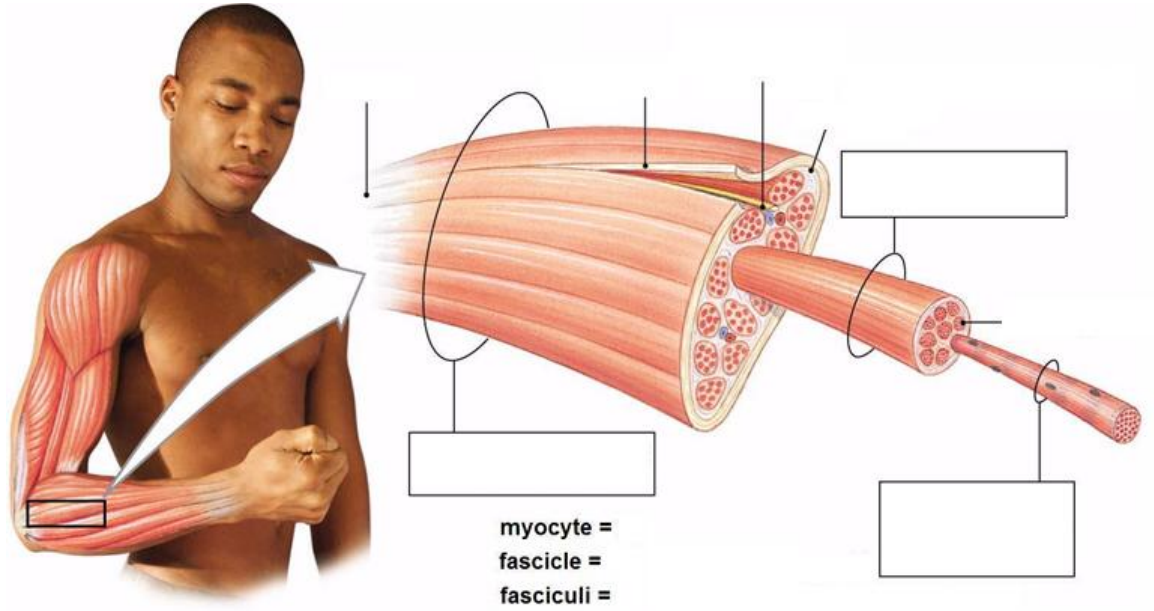
LOCATION:

FUNCTION:

KEY FEATURES:



MUSCLE FIBER

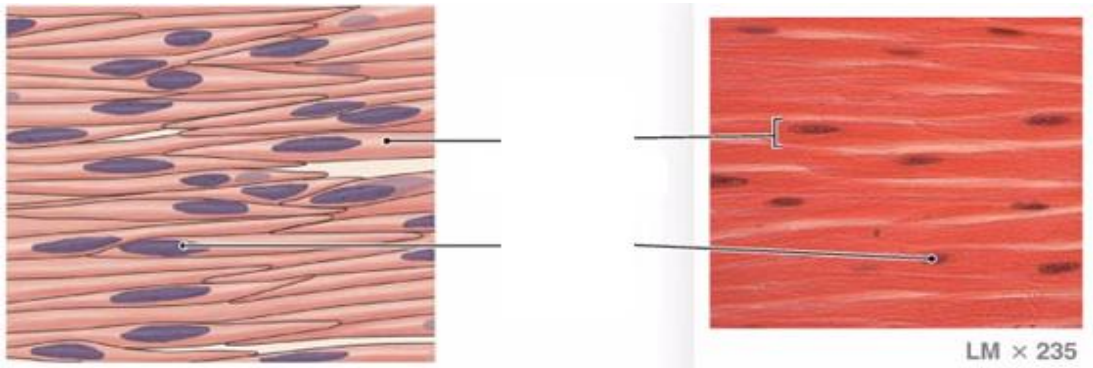


2. SMOOTH MUSCLE:

LOCATION:

FUNCTION:

KEY FEATURES:

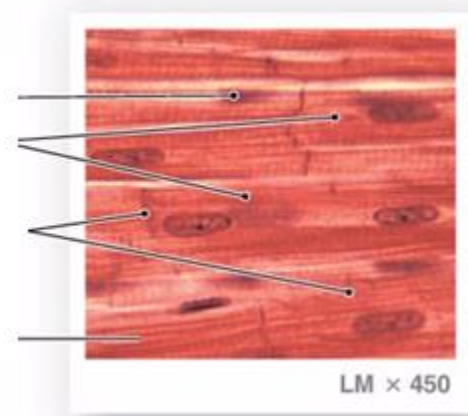
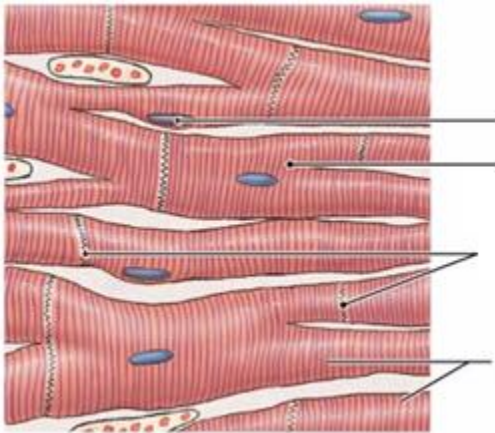


3. CARDIAC MUSCLE:

LOCATION:

FUNCTION:

KEY FEATURES:



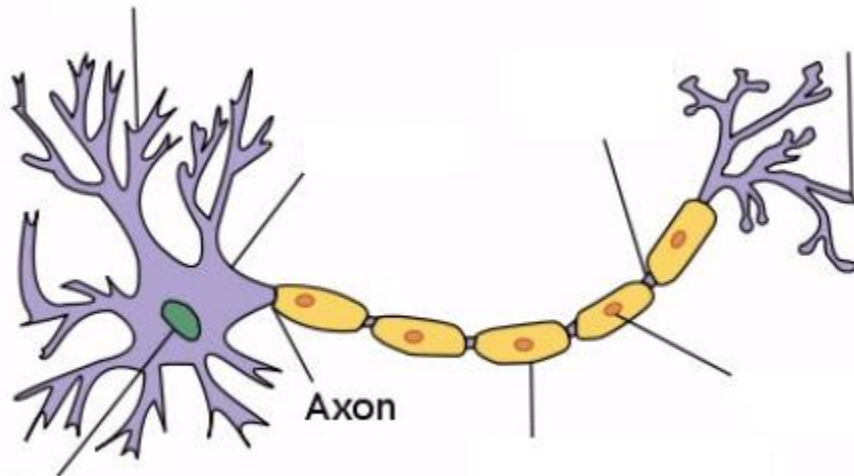
NERVOUS TISSUE NOTES

1. NEURON:

LOCATION:

FUNCTION:

KEY FEATURES:



2. GLIAL CELLS:

LOCATION:

FUNCTION:

TYPES OF GLIAL CELLS:

1. ASTROCYTE —

2. MICROGLIA —

3. OLIGODENDROGLIA —

4. SATELLITE CELL —

5. SCHWANN CELL —