

UNIT 1: PLANES & POSITIONS

ANATOMICAL POSITION:

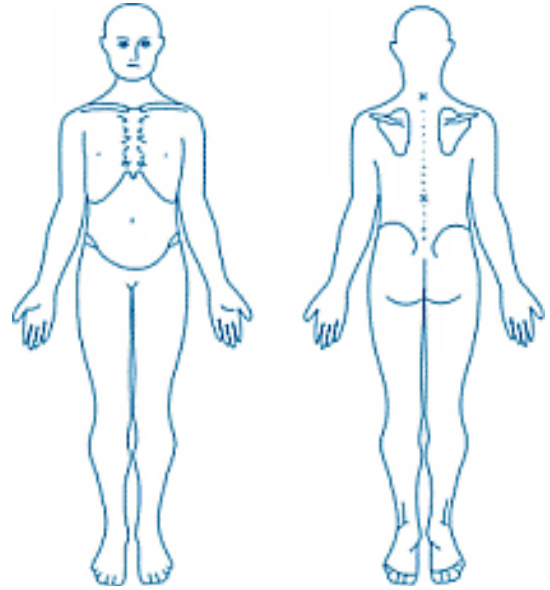
1.

2.

3.

4.

5.



DIRECTIONAL TERMS:

1. SUPINE

2. PRONE

3. SUPERIOR

4. INFERIOR

5. MEDIAL

6. LATERAL

7. PROXIMAL

8. DISTAL

9. SUPERFICIAL

10. DEEP

11. ANTERIOR

VENTRAL

12. POSTERIOR

DORSAL

13. CRANIAL

CAUSTRAL

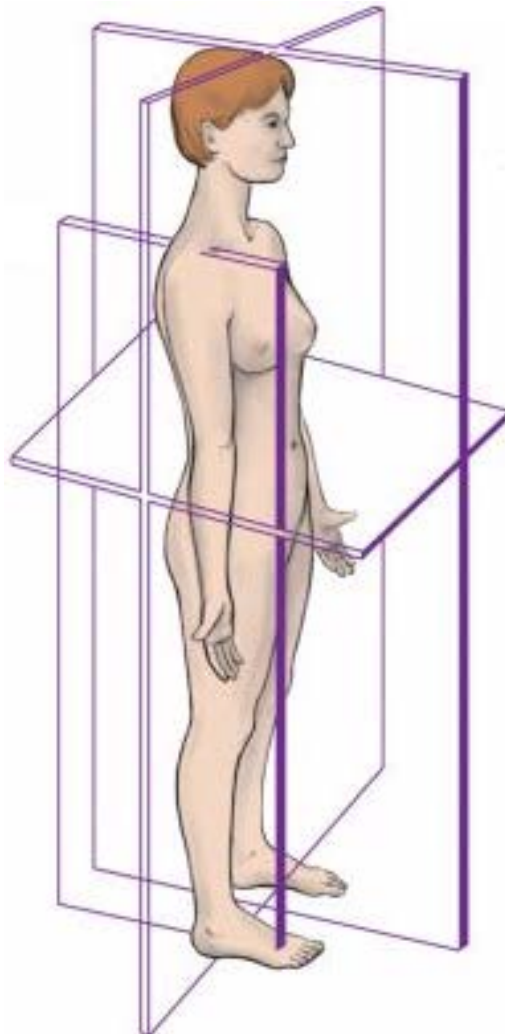
14. CAUDAL

PLANES OF THE BODY

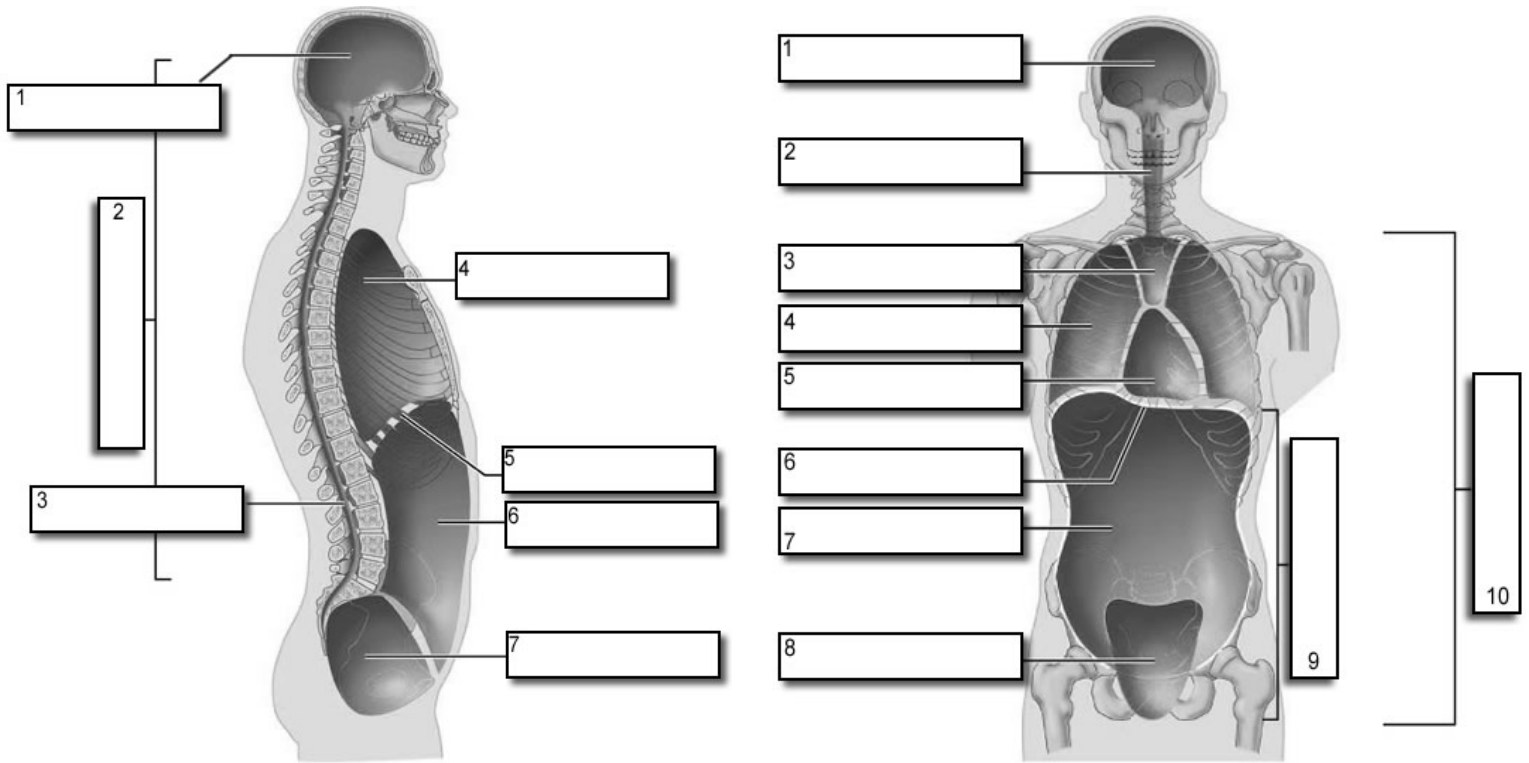
1. *FRONTAL*

2. *SAGITTAL*

3. *TRANSVERSE*



MAJOR CAVITIES OF THE BODY



9 MAJOR ABDOMINAL REGIONS

