

# ***NOTES: THE DIGESTIVE SYSTEM***

## ***PURPOSE OF DIGESTION:***

## ***2 TYPES OF DIGESTION:***

***1. MECHANICAL***

***2. CHEMICAL***

## ***2 TYPES OF GLANDS:***

***1. ENDOCRINE***

***2. EXOCRINE***

## ***THE MOUTH***

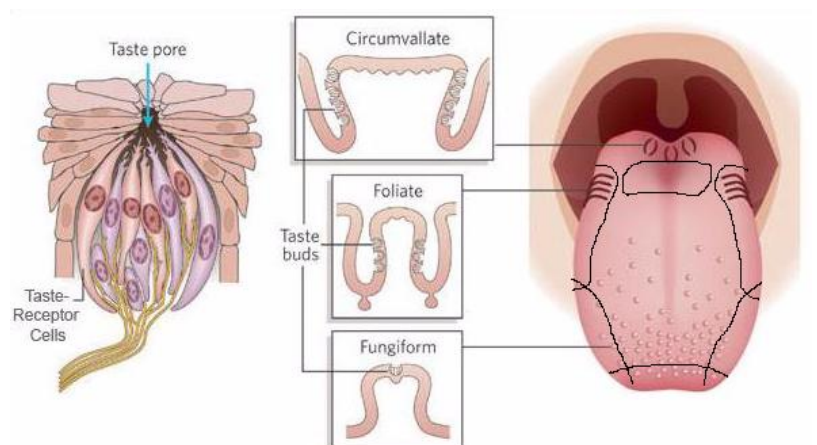
### ***I. ANATOMY***

***A. STRUCTURE***

***B. TEETH***

***C. TASTE BUDS***

***D. UVULA***



## II. PHYSIOLOGY

### A. SALIVARY GLANDS

1

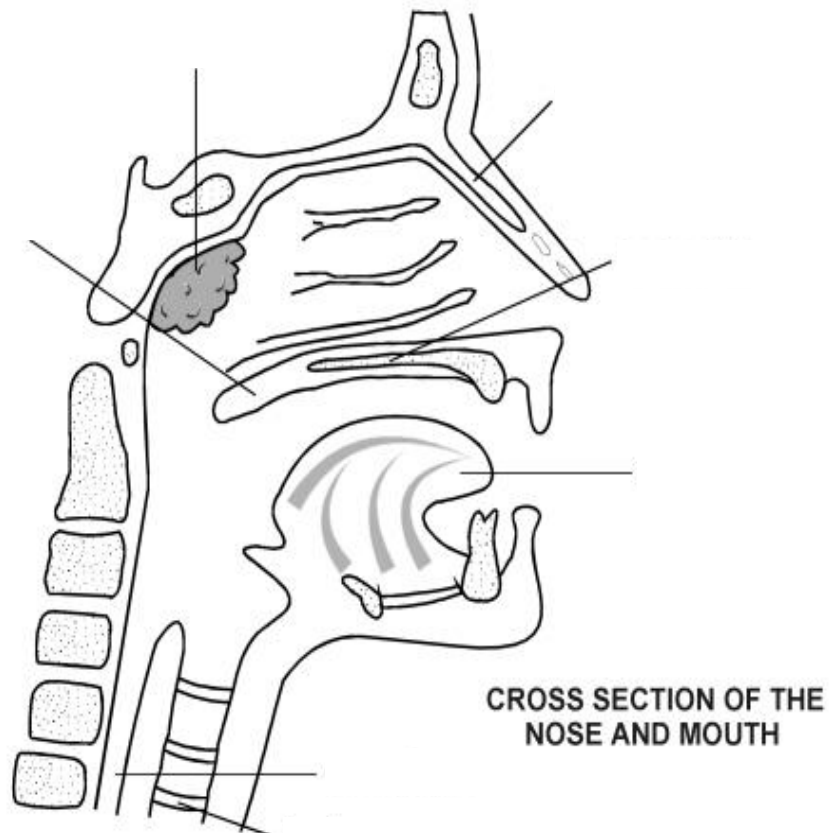
2

3

### B. SALIVA

### C. BOLUS

### D. SWALLOWING



# THE PHARYNX

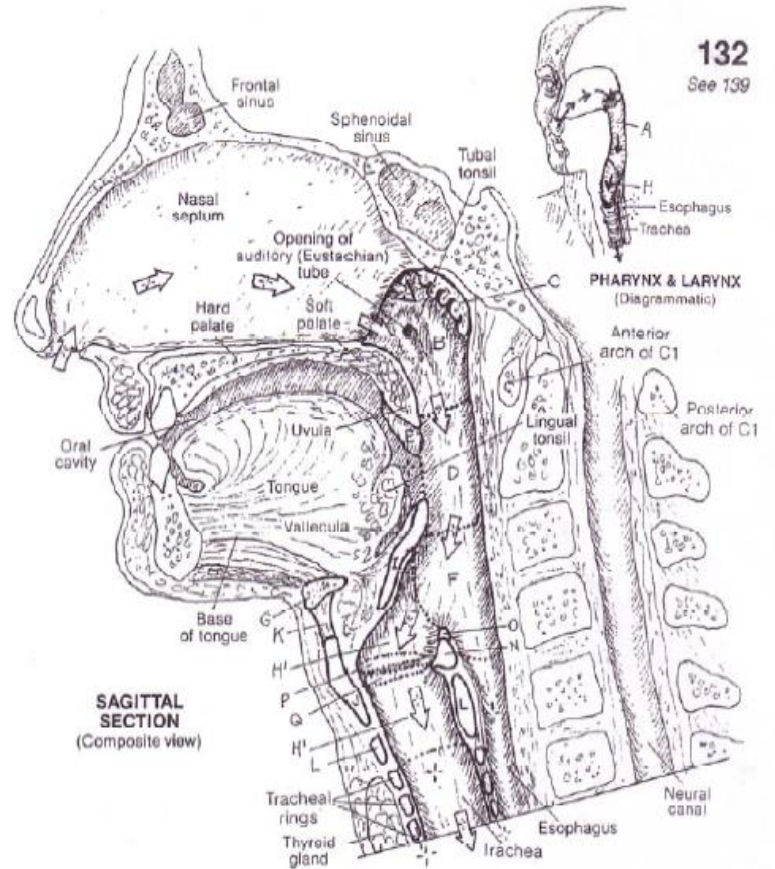
**NASOPHARYNX** <sup>B</sup>  
**PHARYNGEAL TONSIL** <sup>C</sup>  
**EUSTACHIAN TUBE**

**OROPHARYNX** <sup>D</sup>  
**PALATINE TONSIL** <sup>E</sup>

**LARYNGOPHARYNX** <sup>F</sup>

**EPIGLOTTIS** <sup>I</sup>

**UVULA**



# THE ESOPHAGUS

**PERISTALSIS**

# THE STOMACH

## I. ANATOMY

### A. STRUCTURE

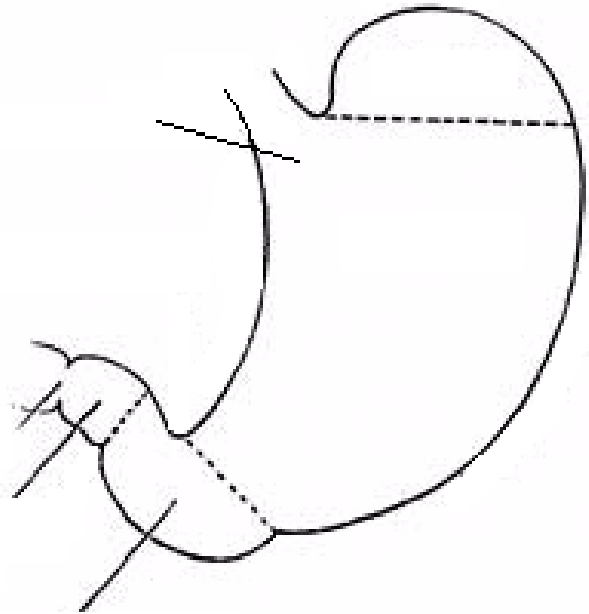
#### 4 MAIN AREAS:

1. **CARDIA** —

2. **FUNDUS** —

3. **BODY** —

4. **PYLORIS** -



### B. LINING OF THE STOMACH

1. **MUCOSA**

2. **RUGAE**

## II. PHYSIOLOGY OF THE STOMACH

### A. METHODS:

1. MECHANICAL

2. CHEMICAL

3. CHYME

4. FOOD

### ESOPHAGUS<sub>A</sub>

### STOMACH REGIONS<sub>+</sub>

CARDIA<sub>B</sub>

FUNDUS<sub>C</sub>

BODY<sub>D</sub>

PYLORUS<sub>E</sub>

### STOMACH WALL<sub>K</sub>

MUCOSAL SURFACE (RUGAE)<sub>F</sub>

SUBMUCOSA<sub>G</sub>

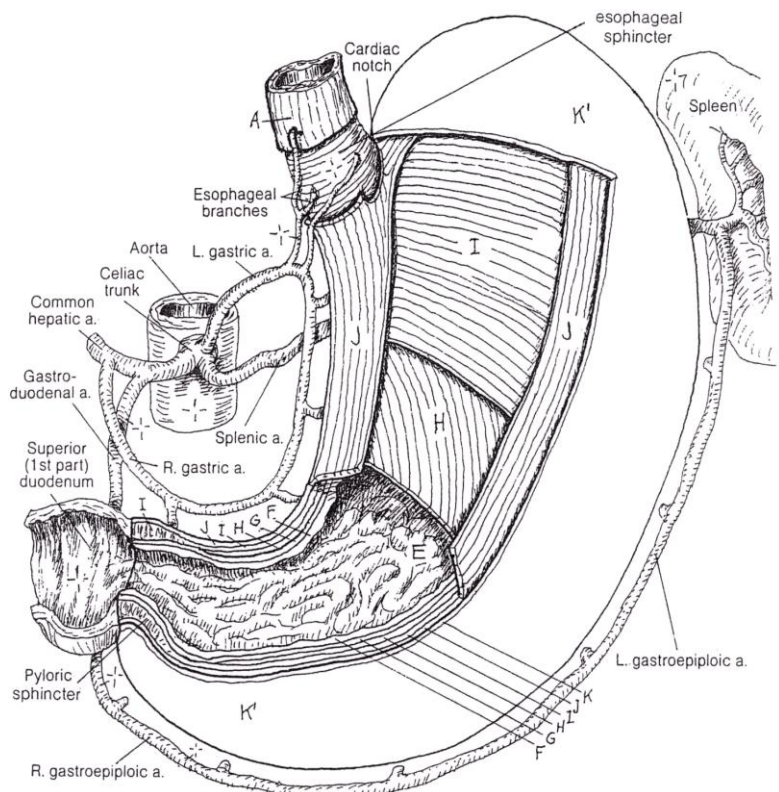
MUSCULARIS EXTERNA<sub>+</sub>

OBLIQUE M.<sub>H</sub>

CIRCULAR M.<sub>I</sub>

LONGITUDINAL M.<sub>J</sub>

SEROSA<sub>K'</sub>





**B. ABSORPTION IN THE STOMACH:**

**C. GASTRIC CELL SECRETIONS:**

1. MUCUS CELLS

2. G-CELL (ENDOCRINE CELL)

3. PARIETAL CELL

4. CHIEF CELL

