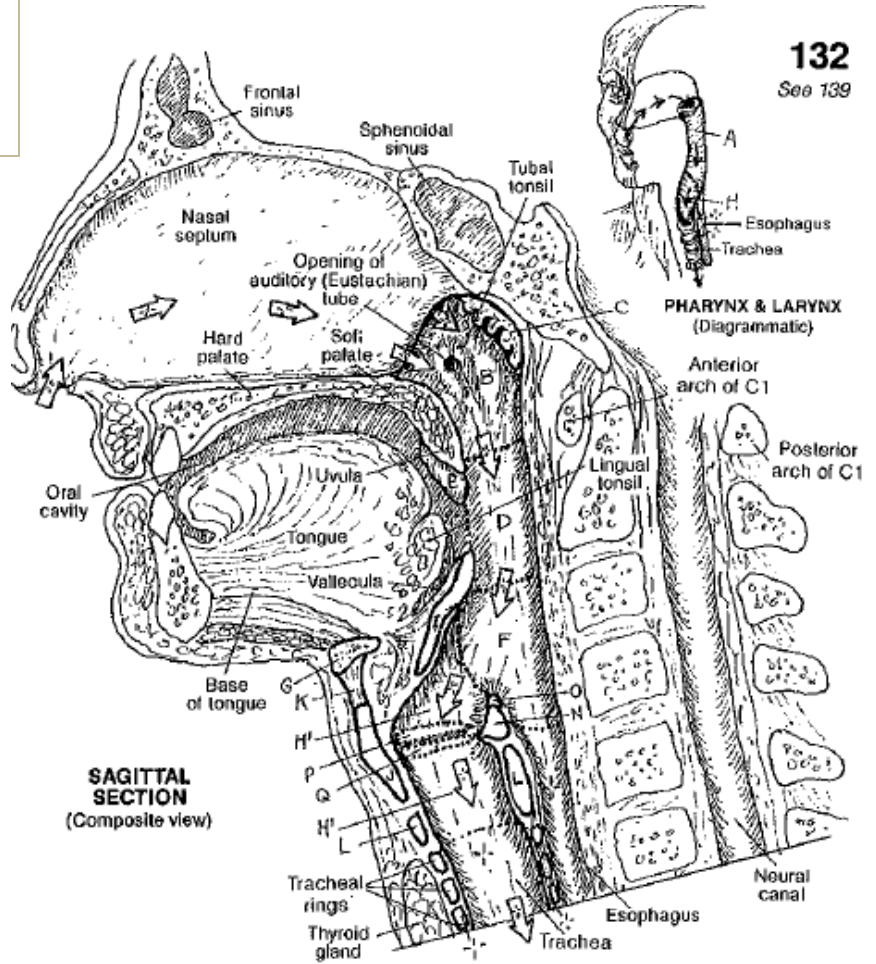


PHARYNX & LARYNX

CN: Use dark or bright colors for N, O, and Q. (1) Begin with the overview diagram in the upper right corner. (2) Complete the large composite sagittal section (do not color the arrows representing air flow). Take note of the surrounding structure as a frame of reference (not to be colored). (3) Color all six laryngeal views simultaneously.

132
See 139

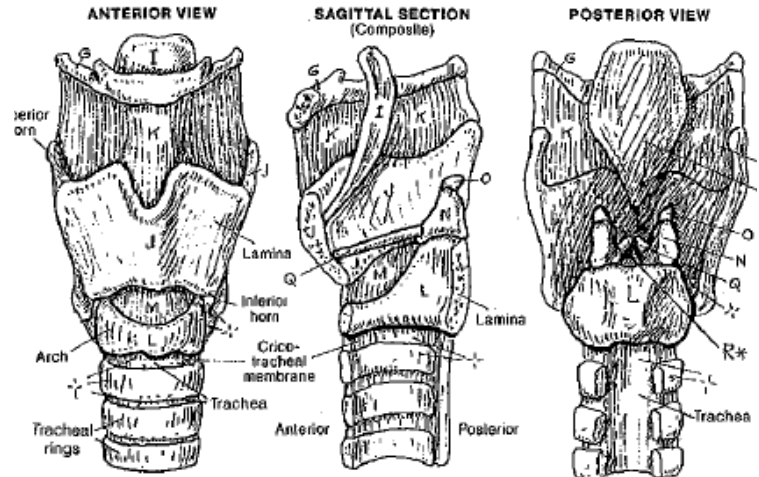
- PHARYNX ^A
- NASOPHARYNX ^B
- PHARYNGEAL TONSIL ^C
- OROPHARYNX ^D
- PALATINE TONSIL ^E
- LARYNGOPHARYNX ^F
- HYOID BONE ^G



SAGITTAL SECTION
(Composite view)

PHARYNX & LARYNX
(Diagrammatic)

- LARYNX ^H
- LARYNGEAL CAVITY ^{H'}
- EPIGLOTTIS ^I
- THYROID CARTILAGE ^J
- THYROID MEMBRANE ^K
- CRICOID CARTILAGE ^L
- CRICOTHYROID LIGAMENT ^M
- ARYTENOID CARTILAGE ^N
- CORNICULATE CARTILAGE ^O
- VESTIBULAR FOLD ^P
- VOCAL FOLD ^Q
- RIMA GLOTTIS ^{R*}



VIEWS OF THE LARYNX